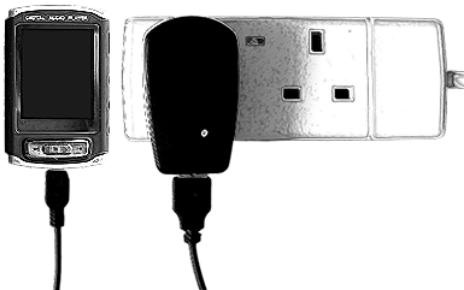




Lite10 Point Quick Start Guide

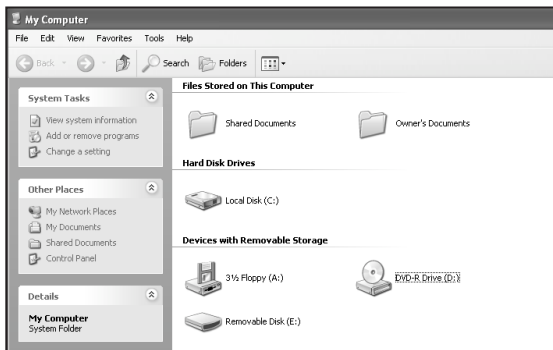
1 Connect your player to the charger with the USB cable provided and plug into the mains (NB the lights on the charger indicate a connection and do not turn off when the device is charged). For a healthy battery life we recommend that you give your new player a full uninterrupted charge of at least 6 hours before first use.



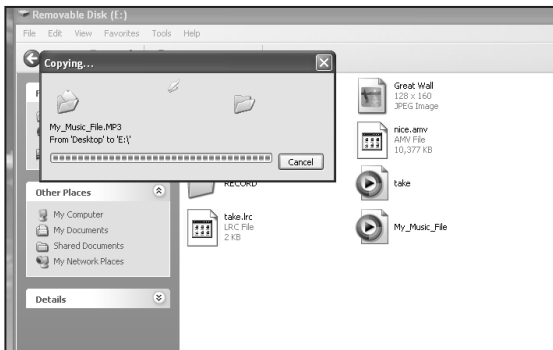
2 To add music, photo and video files to your Lite connect the player to a PC using the USB cable provided.



3 The player should light up as it is connected. On the PC go to Start/My Computer/. The player should show up as 'Removable Disk' or 'Removable Storage Device'.



4 Drag and drop your MP3 music files, JPEG photos and AMV movies onto the Sonix7 Lite. NB There is software on the Sonix7 CD to convert your videos to the correct format.



5 When you have loaded up your player always 'Eject' it so that the Disk icon vanishes from the computer.

6 Sonix7 Lite Overview



Headphone Socket
- Insert headphone jack to switch off player's internal speaker and to use headphones.

On/ Off Switch
- Slide to switch player on or off. NB Holding down the 'Play' button for a few seconds will do the same.

Menu Button -
Press once to select Menu item. Hold down for a few seconds to return to main menu.

USB Socket - Use to connect to power supply for charging or to connect to computer for file transfer. NB USB 2.0 recommended.

Play Button - Press once to start/ stop a track. Hold down for a few seconds to turn player on/ off.

7 Let's play some music!
From the main menu use the 'Arrow' buttons to choose a function eg. Music (also check out Video & Photos). Press the 'Menu' button to make your selection.



8 You can easily navigate through your files using the 'Arrow' buttons and the 'Menu' button.

9 Select the track you want to play using the 'Arrow' buttons and press 'Menu' to start. You can easily adjust the volume using the 'Volume' button and the 'Arrow' buttons.



10 The music player screen allows you to choose tracks and check the track status etc. Remember you can hold down the 'Menu' button for a few seconds to return to the main menu at any time.

Visit www.sonix7.com/support.php for more info...